



# ADULT FIBER ARTS ENTRY GUIDE

## I Spy Summer!

Each exhibitor will receive one 2019 Alameda County Fair admission ticket at time of entry delivery

For Questions, please contact:  
[entries@alamedacountyfair.com](mailto:entries@alamedacountyfair.com)  
925-426-7611

**Entry Deadline: April 24<sup>th</sup>**

***Late Entries: Available ONLINE only through May 10<sup>th</sup> : \$5.00 Per Entry***

***Same Day Entries: May 17<sup>th</sup> (3-8 p.m.) & May 18<sup>th</sup> (9 a.m.-3 p.m.):  
\$10.00 Per Entry  
(must bring printed entry form along with physical entry(ies) and payment during  
delivery periods to Building P)***

Entry Deadline is **April 24<sup>th</sup>!** (See individual pages for Baked/Decorated Food & Contest entry deadlines)

Click Here to Enter Online: <http://alamed.fairwire.com>

If you have any questions, please email [entries@alamedacountyfair.com](mailto:entries@alamedacountyfair.com)

# CREATIVE LIVING COMPLETE GUIDE

**\*For All Entry Drop Off, Enter Through Gate 12 on Valley Avenue\***

Category	Online Entry Deadline	Delivery Information	Release Information
Fiber Arts	April 24 <sup>th</sup>	Building P Friday, May 17 <sup>th</sup> 3:00 – 8:00 p.m. Saturday, May 18 <sup>th</sup> 9:00 a.m. - 3:00 p.m.	Building C—South Door Tues. July 9 <sup>th</sup> 12-8 p.m.

Creative Living Table of Contents	
<b><u>Fiber Arts</u></b>	
Rules	Page 3
Crochet	Page 4
Knitting	Page 5
Lace & Tatting	Page 6
Needle Work & Embroidery	Page 7
Professional Quilting	Page 8
Quilting	Page 9
Rugs	Page 10
Sewing	Page 11
Spinning & Weaving	Page 12

Entry Deadline is **April 24<sup>th</sup>!** (See individual pages for Baked/Decorated Food & Contest entry deadlines)

Click Here to Enter Online: <http://alamed.fairwire.com>

If you have any questions, please email [entries@alamedacountyfair.com](mailto:entries@alamedacountyfair.com)

# FIBER ARTS

Please read competition guidelines: Changes are made each year.

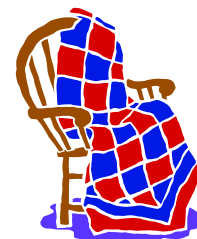
1. Eligibility:
  - a) Open to residents of Alameda, Contra Costa, Marin, San Francisco, San Mateo, Santa Clara, San Joaquin, Stanislaus, and Solano Counties.
  - b) Professional exhibitors (one who has sold more than half of the items made in any year within the entry category, who has taught classes for payment, or is employed in the industry) must enter in the Professional categories only. Professionals receive ribbons, but do not qualify for premiums.
  - c) The exhibitor must home prepare all entries within one year of the opening date of the fair. Items that have been shown at previous Alameda County Fairs are not eligible and will be disqualified.
  - d) The Fair Association reserves the right to refuse any entry or to refuse to display any entry considered not to be in the Fair's best interest of the Fair.
  - e) No entry will be accepted where an exhibitor prescribes conditions under which they will exhibit.
  - f) To enter in Senior categories, exhibitor must be 62 years or older. Entering in a senior class prohibits entries in other classes within the same division.
  - g) Please email [entries@alamedacountyfair.com](mailto:entries@alamedacountyfair.com) or call 925-426-7611 with any questions.
2. Entry Limits:
  - a) Please note all division and class limits.
  - b) All entries will be accepted unless the exhibitor is otherwise notified.
  - c) Entry Fees will not be refunded.
  - d) Similar items may not be entered in multiple divisions or classes.
  - e) Any other classes are for entries that do not fit under another category.
  - f) Items may be transferred to a different division or class by fair personnel. This may result in the exhibitor exceeding class limits which may affect award eligibility.
  - g) Appointments may be made to deliver 10 or more entries on Thursday, May 16<sup>th</sup> from 12-4 p.m.. Please email [entries@alamedacountyfair.com](mailto:entries@alamedacountyfair.com) to request an appointment.
3. Handling:
  - a) Greatest care will be exercised in handling exhibits, but the Fair Management, Alameda County Fair Association, and the County of Alameda will not be held liable for loss, theft or damage of any kind from any cause. Submission of any work constitutes an agreement to this effect.
  - b) No one but the judges and departmental personnel will be allowed to handle exhibits.
4. Display & Presentation:
  - a) Exhibits are displayed to interest the public and showcase the exhibits. The Alameda County Fair assumes total design control over the presentation of the exhibit.
  - b) The Fair will provide an exhibit tag. Please enter with the exhibitor's name as you wish it to appear.
  - c) Items that are soiled or showing wear will not be accepted, judged, or displayed.
  - d) All Quilts and Wall hangings must have a sleeve.
  - e) Displays change every year. While entries will be secure, most items will be not be displayed behind glass or in cases.
  - f) Weight of entry is not to exceed 25 pounds without prior approval. To request approval, please email [entries@alamedacountyfair.com](mailto:entries@alamedacountyfair.com)
5. Judging:
  - a) Entries are judged using the American System of Judging where exhibits are judged against each other. There is the availability of one 1<sup>st</sup>, 2<sup>nd</sup>, 3<sup>rd</sup> Place. Honorable Mention may be awarded at the judge's discretion. All 1<sup>st</sup> place winners in a division will compete against each other for the Best of Show. Judges may choose to omit a placing if is believed to be without merit.
  - b) Qualified judges are selected by the Alameda County Fair. Judging decisions are final.
  - c) Judging results will not be given out by phone, mail, or email.
  - d) The Fair does not guarantee the payment of Sponsored special premiums and awards as they are secured in good faith.
  - e) Sweepstakes ties will be broken by number of 1<sup>st</sup> place entries.
6. Ribbons:
  - a) Ribbons will be handed out at the time of entry pick up. When your exhibit tag indicates that a ribbon has been won, the ribbon is often not displayed—any ribbons won will be waiting for you when you pick up your item.
7. Entry Pick-Up
  - a) Exhibits may not be removed prior to the release day(s).
  - b) Exhibits may be picked up by anyone who has your claim check.
  - c) Exhibits not picked up on the release day(s) will be retained at the Exhibit Office at the owner's risk. There is a storage fee per exhibitor. The Fair Association will not be responsible for unclaimed exhibits and may dispose of remaining items at the start of the Labor Day Weekend.

Entry Deadline is **April 24<sup>th</sup>!** (See individual pages for Baked/Decorated Food & Contest entry deadlines)

Click Here to Enter Online: <http://alamed.fairwire.com>

If you have any questions, please email [entries@alamedacountyfair.com](mailto:entries@alamedacountyfair.com)

**Crochet**



**Entry Fee:** \$2.00 Per Entry  
**Limit:** 2 Entries Per Class, Per Exhibitor  
**No Limit for Professional**

**Online Registration Deadline:** April 24<sup>th</sup>

**Delivery Information:** Friday, May 17<sup>th</sup> 3-8 p.m. or Saturday, May 18<sup>th</sup> 9-3 p.m.

**DIVISION 141—Crochet Afghans**  
**CLASS:**

1. Combination—2 or more types of stitches. No Afghan Stitch.
2. Any Open Stitch
3. Any Closed Stitch
4. Any Other (specify)
5. Lap Size, Any Stitch
6. Seniors (specify)

**DIVISION 142—Crochet Items**  
**CLASS:**

1. Sweater, any weight yarn.
2. Scarves & Shawls
3. Hats
4. Accessories (purses, gloves, etc.)
5. Crochet Trimmed Accessories
6. Lace or Doilies up to 36"
7. Crochet Art (wall hangings, decorations, etc.)
8. Crochet Doll or Animal
9. Any Other Crochet (specify)
10. Seniors (specify)

**DIVISION 143— Infant & Toddler Crochet Afghans**  
**CLASS:**

1. Afghan or Blanket—Any Open Stitch
2. Afghan or Blanket—Any Closed Stitch
3. Afghan or Blanket—Combination (2 or more types of stitches)
4. Seniors—Afghan or Blanket

**DIVISION 144--Infant & Toddler Crochet Items**  
**CLASS:**

1. Single Item (dress, booties, hat, etc.)
2. Set (2 or more pieces)
3. Any Other Infant & Toddler Crochet Item (specify)
4. Seniors—Any Infant & Toddler Crochet Item (specify)

**DIVISION 199—Professional Crochet**  
**CLASS:**

6. Professional Crochet (specify)

**SPECIAL RULES:**

- Please indicate on an attached card which side of the item is to be displayed.
- Please attach a skein or card to your entry indicating the type of yarn used.
- If there is more than one unattached piece, please label each piece 1 of 3, 2 of 3, etc.
- Afghans—class 1-4:  
 Maximum size 70"x75" (not counting fringe)  
 Minimum size 48"x60"
- Afghans/Blankets in Infant/Toddler Division should be crib size.

**Judging Standards:**

25% **Appearance**  
 50% **Workmanship**  
 25% **Suitability**  
 100%

**Divisions 141-144:**

*Cash Prizes Per Class:*

**1<sup>st</sup> Place: \$10.00**  
**2<sup>nd</sup> Place: \$7.00**  
**3<sup>rd</sup> Place: \$5.00**

**Textile Sweepstakes:**

**(Divisions 141-162)**

**Based on points earned:**

(1<sup>st</sup>=5 points, 2<sup>nd</sup>=3 points, 3<sup>rd</sup>=1 point)

**1<sup>st</sup> Place: \$30**  
**2<sup>nd</sup> Place: \$25**  
**3<sup>rd</sup> Place: \$20**  
**4<sup>th</sup> Place: \$15**  
**5<sup>th</sup> Place: \$10**

Entry Deadline is **April 24<sup>th</sup>!** (See individual pages for Baked/Decorated Food & Contest entry deadlines)

Click Here to Enter Online: <http://alamed.fairwire.com>

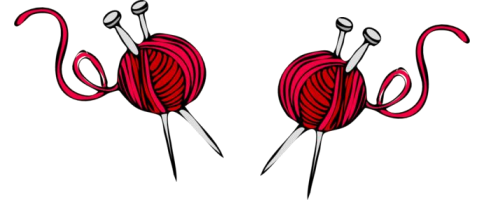
If you have any questions, please email [entries@alamedacountyfair.com](mailto:entries@alamedacountyfair.com)

# Hello Summer!

## ALAMEDA COUNTY FAIR

### JUNE 15—JULY 8

## Knitting



**Entry Fee:** \$2.00 Per Entry  
**Limit:** 2 Entries Per Class, Per Exhibitor  
**No Limit for Professional**

**Online Registration Deadline:** April 24<sup>th</sup>

**Delivery Information:** Friday, May 17<sup>th</sup> 3-8 p.m. or Saturday, May 18<sup>th</sup> 9-3 p.m.

### **DIVISION 145**—Hand Knit Sweaters

#### **CLASS:**

1. Child, Any Weight Yarn
2. Adult, plain stitch or overall pattern
3. Adult, one color, pattern stitch
4. Adult, multi-color, pattern stitch
5. Adult, Fisherman's knit (Irish)
6. Any Other Sweater (specify)
7. Seniors

### **DIVISION 146**—Hand Knit Items

#### **CLASS:**

1. Knit Afghan, any size
2. Flat Accessories (scarf, shawl, etc.)
3. Socks
4. Accessories (hats, purses, etc.)
5. Knit Art (wall hanging, decorations, etc.)
6. Any Other knit (specify)
7. Seniors (specify)

#### **SPECIAL RULES:**

- Please attach a skein or card to your entry indicating the type of yarn used.
- Afghans/Blankets in Infant/Toddler Division must be crib size.
- Professionals receive ribbons only—no premiums.
- For Needle Felting, please see the Needlework division.
- If there is more than one unattached piece, please label each piece 1 of 3, 2 of 3, etc.

#### Judging Standards:

25% **Appearance**  
 50% **Workmanship**  
 25% **Suitability**  
 100%

#### Divisions 145-148:

##### *Cash Prizes Per Class:*

**1<sup>st</sup> Place: \$10.00**  
**2<sup>nd</sup> Place: \$7.00**  
**3<sup>rd</sup> Place: \$5.00**

#### Textile Sweepstakes:

##### **(Divisions 141-162)**

##### **Based on points earned:**

(1<sup>st</sup>=5 points, 2<sup>nd</sup>=3 points, 3<sup>rd</sup>=1 point)

**1<sup>st</sup> Place: \$30**  
**2<sup>nd</sup> Place: \$25**  
**3<sup>rd</sup> Place: \$20**  
**4<sup>th</sup> Place: \$15**  
**5<sup>th</sup> Place: \$10**

Entry Deadline is **April 24<sup>th</sup>!** (See individual pages for Baked/Decorated Food & Contest entry deadlines)

Click Here to Enter Online: <http://alamed.fairwire.com>

If you have any questions, please email [entries@alamedacountyfair.com](mailto:entries@alamedacountyfair.com)



## Lace & Tatting

**Entry Fee:** \$2.00 Per Entry  
**Limit:** 2 Entries Per Class, Per Exhibitor  
**No Limit for Professional**

**Online Registration Deadline:** April 24<sup>th</sup>

**Delivery Information:** Friday, May 17<sup>th</sup> 3-8 p.m. or Saturday, May 18<sup>th</sup> 9-3 p.m.

**DIVISION 149**—Lace & Tatting

**CLASS:**

1. Bobbin Lace, Torchon Style
2. Bobbin Lace, Any Other Style
3. Tatting
4. Any Other Lace Technique

**DIVISION 199**—Professional Lace & Tatting

**CLASS:**

8. Professional Lace & Tatting (specify)

**SPECIAL RULES:**

- Please remove any glass on items that are framed.
- Framed pieces must have an appropriate hanger or stand.

Judging Standards:

70% **Workmanship & Technical Skills**

20% **Appearance & Overall Impression**

10% **Difficulty Factor**

100%

Division 149:

*Cash Prizes Per Class:*

**1<sup>st</sup> Place: \$6.00**

**2<sup>nd</sup> Place: \$4.00**

**3<sup>rd</sup> Place: \$3.00**

Textile Sweepstakes:

**(Divisions 141-162**

**Based on points earned**

(1<sup>st</sup>=5 points, 2<sup>nd</sup>=3 points, 3<sup>rd</sup>=1 point)

**1<sup>st</sup> Place: \$30**

**2<sup>nd</sup> Place: \$25**

**3<sup>rd</sup> Place: \$20**

**4<sup>th</sup> Place: \$15**

**5<sup>th</sup> Place: \$10**

Entry Deadline is **April 24<sup>th</sup>!** (See individual pages for Baked/Decorated Food & Contest entry deadlines)

Click Here to Enter Online: <http://alamed.fairwire.com>

If you have any questions, please email [entries@alamedacountyfair.com](mailto:entries@alamedacountyfair.com)

## Needlework & Embroidery

**Entry Fee:** \$2.00 Per Entry  
**Limit:** 2 Entries Per Class, Per Exhibitor  
**No Limit for Professional**

**Online Registration Deadline:** April 24<sup>th</sup>

**Delivery Information:** Friday, May 17<sup>th</sup> 3-8 p.m. or Saturday, May 18<sup>th</sup> 9-3 p.m.

**DIVISION 150—Needlework**  
**CLASS:**

1. Counted Cross Stitch – finished size up to 18” (not including frame)
2. Counted Cross Stitch – finished size over 18” (not including frame)
3. Needle Felting
4. Needlepoint
5. Any Holiday Needlework
6. Any Fair Themed Needlework
7. Senior—Any Needlework

**DIVISION 151—Embroidery**  
**CLASS:**

1. Surface Embroidery
2. Machine Embroidery
3. Any Other Embroidery
4. Senior—Any Embroidery

**DIVISION 199—Professional**  
**CLASS:**

9. Professional--Any Needlework/Embroidery

### SPECIAL RULES:

- Any framed pictures need to have the back neatly finished and ready to hang with picture wire or have an appropriate stand.
- Glass and Plexiglas should be removed from any frames before delivery. Artwork with glass or Plexiglas will be marked down due to judges not being able to clearly see technique.
- Sleeves are required on any wall hangings.

Judging Standards:  
30% **General Appearance**  
50% **Workmanship**  
20% **Suitability**  
100%

Division 150-151  
*Cash Prizes Per Class:*  
**1<sup>st</sup> Place: \$8.00**  
**2<sup>nd</sup> Place: \$6.00**  
**3<sup>rd</sup> Place: \$4.00**

Textile Sweepstakes:  
**(Divisions 141-162)**  
**Based on points earned:**  
(1<sup>st</sup>=5 points, 2<sup>nd</sup>=3 points, 3<sup>rd</sup>=1 point)  
**1<sup>st</sup> Place: \$30**  
**2<sup>nd</sup> Place: \$25**  
**3<sup>rd</sup> Place: \$20**  
**4<sup>th</sup> Place: \$15**  
**5<sup>th</sup> Place: \$10**

Entry Deadline is **April 24<sup>th</sup>!** (See individual pages for Baked/Decorated Food & Contest entry deadlines)

Click Here to Enter Online: <http://alamed.fairwire.com>

If you have any questions, please email [entries@alamedacountyfair.com](mailto:entries@alamedacountyfair.com)

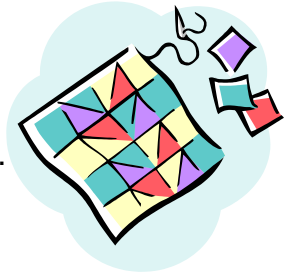
## Professional Quilting

**Entry Fee:** \$2.00 Per Entry

**Limit:** No Limit

**Online Registration Deadline:** April 24<sup>th</sup>

**Delivery Information:** Friday, May 17<sup>th</sup> 3-8 p.m. or Saturday, May 18<sup>th</sup> 9-3 p.m.



### **DIVISION 199—PROFESSIONAL QUILTING**

#### **CLASS:**

- 10. Any Professional Bed Quilt
- 11. Any Professional Wall Hanging
- 12. Any Other Professional Quilting (clothing, pillow, table runner, etc.)

#### **SPECIAL RULES:**

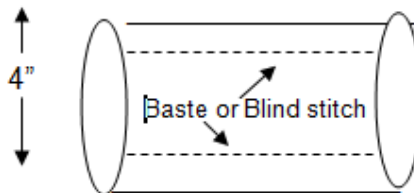
- **All quilts and wall hangings MUST have a 4" sleeve** casing at the top back to accommodate a cross pole for hanging. Sleeve must be continuous across the width of the quilt. Fold a 9" strip of fabric in half and sew with a 1/2" seam, making a long tube. Place seam against quilt back and baste or blind stitch sleeve in place 1" below top and 1/2" from each side, taking care not to sew through the front of the quilt. (See figure)
- **Please ensure that both the top and bottom of the sleeve are sewn securely to the quilt for hanging purposes.**
- **Quilts larger than our display area may need to be pinned.**
- In cases where someone other than the exhibitor did the quilting, please specify the quilter's name when entering.
- Professionals receive ribbons only. There are no premiums in this division.
- **When necessary due to space constraints, only a portion of non-rosette winning quilts may be visible.**

#### Judging Standards:

50% **Art**

50% **Construction**

100%



Entry Deadline is **April 24<sup>th</sup>**! (See individual pages for Baked/Decorated Food & Contest entry deadlines)

Click Here to Enter Online: <http://alamed.fairwire.com>

If you have any questions, please email [entries@alamedacountyfair.com](mailto:entries@alamedacountyfair.com)



**Quilting**

**Entry Fee:** \$2.00 Per Entry  
**Limit:** 2 Entries Per Class, Per Exhibitor  
**Online Registration Deadline:** April 24<sup>th</sup>  
**Delivery Information:** Friday, May 17<sup>th</sup> 3-8 p.m. or Saturday, May 18<sup>th</sup> 9-3 p.m.



**DIVISION 152—Hand Quilted By Exhibitor**

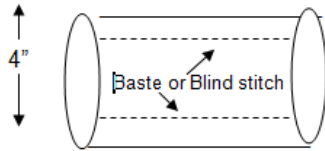
- CLASS:**
1. Bed Quilt
  2. Wall Hanging

**DIVISION 153—Machine Quilted By Exhibitor**

- CLASS:**
1. Bed Quilt--Full to King
  2. Bed Quilt—Twin & Smaller (crib, lap, etc.)
  3. Wall Hanging

**DIVISION 154—Specialty Quilting**

- CLASS:**
1. Miscellaneous Quilts (tied, yo-yo, etc.)
  2. Quilted Table Runner
  3. Other Quilted Item (pillow, quilted clothing, etc.)



**DIVISION 155—Quilt Top By Exhibitor.**

Quilted By Another. Please specify quilter's name

- CLASS:**
1. Bed Quilt—Full to King
  2. Bed Quilt—Twin & Smaller (crib, lap, etc.)
  3. Wall Hanging

**DIVISION 156—Senior Quilting**

- CLASS:**
1. Bed Quilt
  2. Wall Hanging
  3. Any Other (clothing, pillows, table runners, etc.)

**DIVISION 157—Embellished Quilts**

- CLASS:**
1. Any Embellished Quilt (Embroidery, special effects, etc.)

**DIVISION 158—Group Quilts**

- CLASS:**
1. Any Group Quilt

**SPECIAL RULES:**

- **All quilts and wall hangings MUST have a 4" sleeve** casing at the top back to accommodate a cross pole for hanging. Sleeve must be continuous across the width of the quilt. Fold a 9" strip of fabric in half and sew with a 1/2" seam, making a long tube. Place seam against quilt back and baste or blind stitch sleeve in place 1" below top and 1/2" from each side, taking care not to sew through the front of the quilt. (See above)
- **Please ensure that both the top and bottom of the sleeve are sewn securely to the quilt for hanging purposes.**
- **When necessary due to space constraints, only a portion of non-rosette winning quilts may be visible.**
- **Quilts larger than our display area may need to be pinned.**
- In cases where someone other than the exhibitor did the quilting, please specify the quilter's name when entering.

**Judging Standards:**

50% **Art**  
 50% **Construction**  
 100%

**Cash Prizes Per Class:**

**1<sup>st</sup> Place: \$12.00**  
**2<sup>nd</sup> Place: \$8.00**  
**3<sup>rd</sup> Place: \$6.00**

**Textile Sweepstakes:**

*(Divisions 141-162)*  
**Based on points earned:**  
*(1<sup>st</sup>=5 points, 2<sup>nd</sup>=3 points, 3<sup>rd</sup>=1 point)*  
**1<sup>st</sup> Place: \$30**  
**2<sup>nd</sup> Place: \$25**  
**3<sup>rd</sup> Place: \$20**  
**4<sup>th</sup> Place: \$15**  
**5<sup>th</sup> Place: \$10**

Entry Deadline is **April 24<sup>th</sup>!** (See individual pages for Baked/Decorated Food & Contest entry deadlines)

Click Here to Enter Online: <http://alamed.fairwire.com>

If you have any questions, please email [entries@alamedacountyfair.com](mailto:entries@alamedacountyfair.com)

**Rugs**

**Entry Fee:** \$2.00 Per Entry  
**Limit:** 2 Entries Per Class, Per Exhibitor  
**No Limit for Professional**

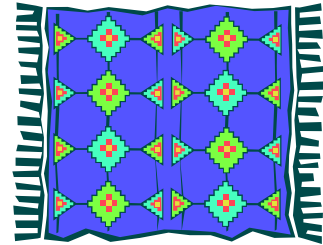
**Online Registration Deadline:** April 24<sup>th</sup>

**Delivery Information:** Friday, May 17<sup>th</sup> 3-8 p.m. or Saturday, May 18<sup>th</sup> 9-3 p.m.

**DIVISION 159—Rugs**

**CLASS:**

1. Wide Cut
2. Fine Cut
3. Any Other Rug (specify)



**DIVISION 199—Professional Rugs**

**CLASS:**

13. Any Professional Rug

**SPECIAL RULES:**

- To enter latch hook rugs, please go to the Arts & Crafts section.

**Judging Standards:**

- 30% **Appearance**
- 40% **Workmanship**
- 20% **Suitability**
- 10% **Creativity**
- 100%

**Division 159:**

*Cash Prizes Per Class:*

- 1<sup>st</sup> Place: \$10.00**
- 2<sup>nd</sup> Place: \$7.00**
- 3<sup>rd</sup> Place: \$5.00**

**Textile Sweepstakes:**

**(Divisions 141-162)**

**Based on points earned:**

(1<sup>st</sup>=5 points, 2<sup>nd</sup>=3 points, 3<sup>rd</sup>=1 point)

- 1<sup>st</sup> Place: \$30**
- 2<sup>nd</sup> Place: \$25**
- 3<sup>rd</sup> Place: \$20**
- 4<sup>th</sup> Place: \$15**
- 5<sup>th</sup> Place: \$10**

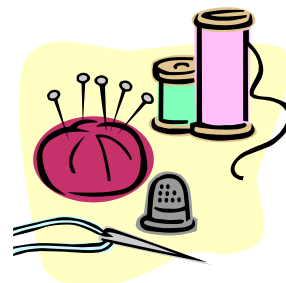
Entry Deadline is **April 24<sup>th</sup>!** (See individual pages for Baked/Decorated Food & Contest entry deadlines)

Click Here to Enter Online: <http://alamed.fairwire.com>

If you have any questions, please email [entries@alamedacountyfair.com](mailto:entries@alamedacountyfair.com)

## Sewing

**Entry Fee:** \$2.00 Per Entry  
**Limit:** 2 Entries Per Class, Per Exhibitor  
**No Limit for Professional**



**Online Registration Deadline:** April 24<sup>th</sup>

**Delivery Information:** Friday, May 17<sup>th</sup> 3-8 p.m. or Saturday, May 18<sup>th</sup> 9-3 p.m.

### **DIVISION 163—Adult Clothing**

**CLASS:**

1. One piece garment (blouse, coat, vest, dress, etc.)
2. Costume—Adult sized
3. Gowns & Formals (wedding gown, prom dress, etc.)
4. Any Coordinated Outfit
5. Any Other Clothing (specify)
6. Seniors (specify)

### **DIVISION 164—Children’s Clothing**

**CLASS:**

1. Costume—Child sized
2. Dress Clothes
3. Play Clothes
4. Smocked Item
5. Any Other (specify)
6. Seniors (specify)

### **DIVISION 165—Miscellaneous Sewing**

**CLASS:**

1. Apron
2. Fashion Accessories (hats, scarves, etc.)
3. Kitchen Items (pot holders, napkins, table linens, etc.)
4. Purse/Tote Bag
5. Doll Clothing—single coordinated outfit
6. Pillows
7. Any Other (specify)
8. Seniors (specify)

### **DIVISION 166—Repurposed Clothing**

**CLASS:**

1. Any Repurposed Clothing Item

### **DIVISION 199—Professional Sewing**

**CLASS:**

14. Any Professional Sewing

### **SPECIAL RULES:**

- No Knit or Crochet items. Please see Knit and Crochet categories.
- Repurposed Clothing/Sewing Items are items that start as one wearable item and are turned into a different wearable item. Please attach a photo of the original clothing item prior to it being repurposed.

Judging Standards:  
 40% **General Appearance**  
 60% **Workmanship**  
 100%

Divisions 163-166  
*Cash Prizes Per Class:*  
**1<sup>st</sup> Place: \$10.00**  
**2<sup>nd</sup> Place: \$7.00**  
**3<sup>rd</sup> Place: \$5.00**

Sewing Sweepstakes:  
*(Divisions 164-167)*  
**Based on points earned:**  
(1<sup>st</sup>=5 points, 2<sup>nd</sup>=3 points, 3<sup>rd</sup>=1 point)  
**1<sup>st</sup> Place: \$30**  
**2<sup>nd</sup> Place: \$25**  
**3<sup>rd</sup> Place: \$20**  
**4<sup>th</sup> Place: \$15**  
**5<sup>th</sup> Place: \$10**

Entry Deadline is **April 24<sup>th</sup>!** (See individual pages for Baked/Decorated Food & Contest entry deadlines)

Click Here to Enter Online: <http://alamed.fairwire.com>

If you have any questions, please email [entries@alamedacountyfair.com](mailto:entries@alamedacountyfair.com)

**Spinning & Weaving**

**Entry Fee:** \$2.00 Per Entry  
**Limit:** 2 Entries Per Class, Per Exhibitor  
**No Limit for Professional**



**Online Registration Deadline:** April 24<sup>th</sup>

**Delivery Information:** Friday, May 17<sup>th</sup> 3-8 p.m. or Saturday, May 18<sup>th</sup> 9-3 p.m.

**DIVISION 160—Hand Spun Yarn**  
 (Enter 1 skein)

**CLASS:**

1. Wool
2. Wool Blends
3. Other Animal Fiber (specify)
4. Cotton
5. Blends
6. Novelty Yarns
7. Alpaca
8. Angora
9. Any Other Fiber (specify)

**DIVISION 161—Hand Spun Articles**  
 (Using yarn exhibitor has spun themselves)  
 Include a 3 yard skein of fibers used

**CLASS:**

1. Hand Spun Articles (weaving, crochet, knit, etc.)

**DIVISION 162—Weaving**

**CLASS:**

1. Home Accessories (placemats, rugs, etc.)
2. Clothing Accessories (hat, scarf, etc.)
3. Any Other (specify)

**DIVISION 199 Professional Spinning & Weaving**

**CLASS:**

15. Professional Spinning/Weaving

**SPECIAL RULES:**

- Skeins must be at least 20 yards. Please attach 4"x4" swatch of material showing intended use of yarn to each entry.

Judging Standards:

30% **Appearance**  
 40% **Workmanship**  
 20% **Suitability**  
 10% **Creativity**  
 100%

Divisions 160-162

*Cash Prizes Per Class:*

**1<sup>st</sup> Place: \$6.00**  
**2<sup>nd</sup> Place: \$4.00**  
**3<sup>rd</sup> Place: \$3.00**

Textile Sweepstakes:

*(Divisions 141-162)*

**Based on points earned:**

*(1<sup>st</sup>=5 points, 2<sup>nd</sup>=3 points, 3<sup>rd</sup>=1 point)*

**1<sup>st</sup> Place: \$30**  
**2<sup>nd</sup> Place: \$25**  
**3<sup>rd</sup> Place: \$20**  
**4<sup>th</sup> Place: \$15**  
**5<sup>th</sup> Place: \$10**

Entry Deadline is **April 24<sup>th</sup>!** (See individual pages for Baked/Decorated Food & Contest entry deadlines)

Click Here to Enter Online: <http://alameda.fairwire.com>

If you have any questions, please email [entries@alamedacountyfair.com](mailto:entries@alamedacountyfair.com)